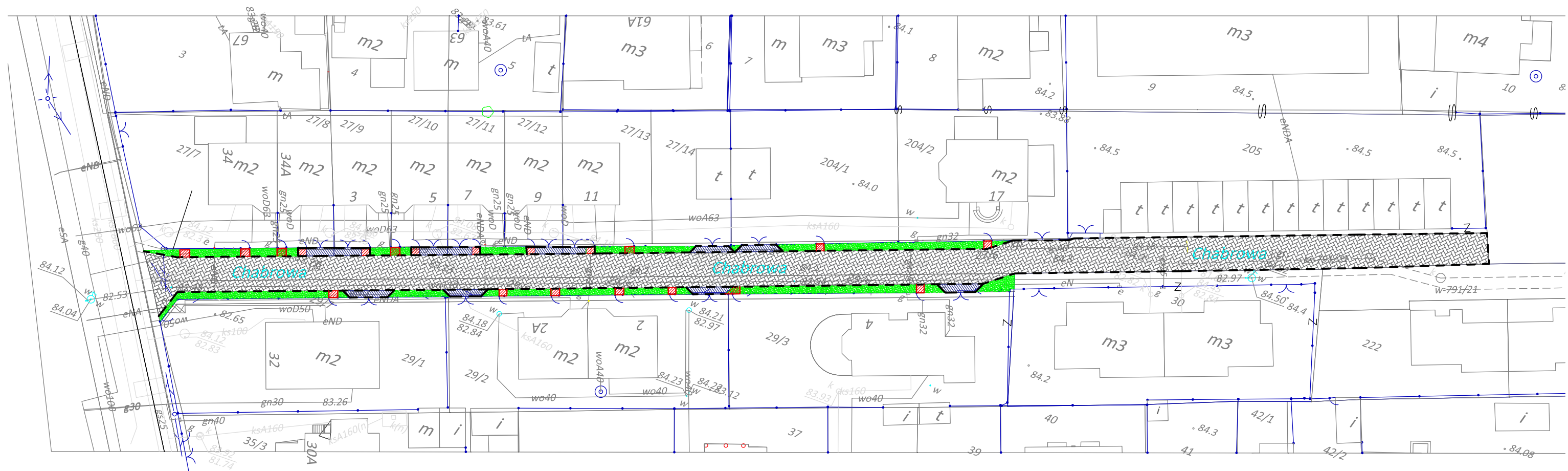








PRZEBUDOWA DROGI W ULICY CHABROWEJ W ZĄBKACH



Skala 1:500

Legenda:

- | | |
|---|--|
|  | <i>chodnik kostka brukowa betonowa, kolor czerwony</i> |
|  | <i>zjazd kostka brukowa betonowa, kolor grafitowy</i> |
|  | <i>jezdnia kostka brukowa betonowa, kolor szary</i> |
|  | <i>zielen</i> |
|  | <i>krawężnik wtopiony 100x25x12 cm, kolor szary</i> |
|  | <i>obrzeże 100x30x8 cm, kolor szary</i> |